



Introducing the WASSP-S™ Multi Beam Survey System

Ross Laboratories, Inc. is pleased to introduce the WASSP-S™ Multi Beam System. With the researcher and small business owner in mind, the WASSP-S™ is an affordable survey grade system starting at just under \$58,000 USD!

ADVANTAGES

★WASSP-S™ offers Flexibility and Affordability

Hydrographic Surveys, Habitat & Resource Management, Wreck and Object Location, Plume Tracking... When it's important to view as much of the bottom features and details, or what's just above it, the WASSP-S™ system does not disappoint! Built with the user's needs in mind: ***See more and be affordably priced***, we think you'll be pleased.

It's true! The WASSP-S™ Multi Beam System is easy-to-operate and ownership is so accessible! At an unbelievable price of under \$58,000 USD our basic system is perfect for those who already own GPS and motion sensor equipment. For \$96,000 USD your company is in the game with a complete turn-key system, including HyPack™ & Hysweep™ software!

★Perform In-House Surveys

For smaller contractors, having your own survey system puts you back in charge! No more hiring expensive outside survey firms to do your pre-bid surveys and daily surveys during dredging operations! Conducting in-house surveys mean you can *work on your time schedule* and safely move equipment to the next site. Get rid of the frustration and downtime of helplessly waiting for an outside survey firm to complete the final post dredge survey!

WASSP-S™ interfaces with Hysweep™ software to provide full survey capability.

★Small Work Boat Friendly

The compact design of the WASSP-S™ makes it an ideal system for small boat operation. At 7 lbs. and 13"L x 6.6"W x 3.8"H the transducer is easily adaptable to over the side pole mounting.

★Water Column Management

The "Navigator"™ software provides water column information in an intuitive user interface. It is ideal for tracking the movement of sediment plumes from a dredge and is also great for monitoring schools of fish. Both uses can be viewed in 3-D from any angle throughout the survey area .



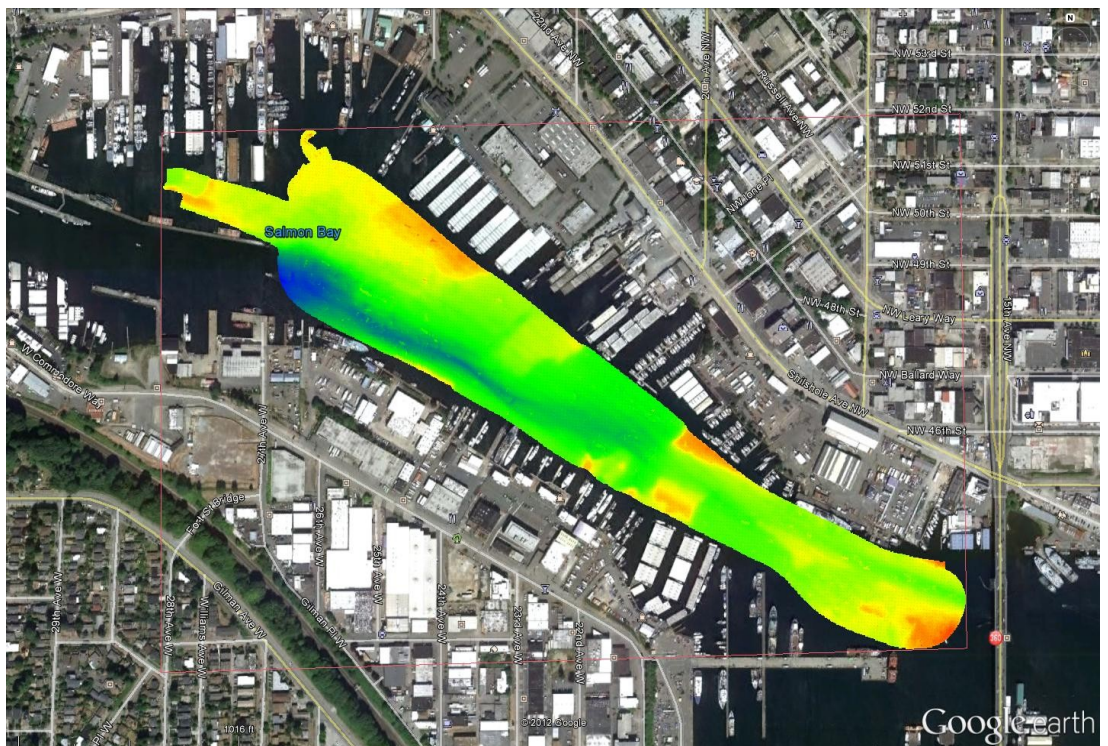
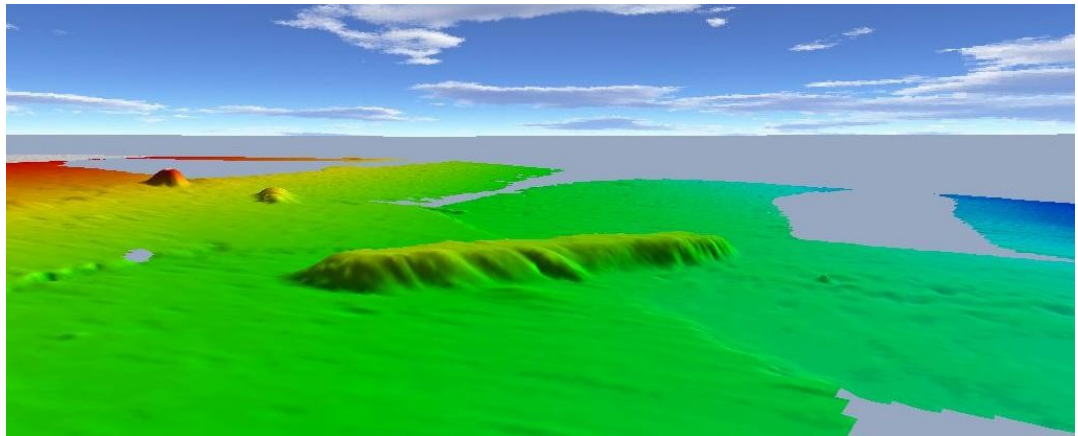
★Strong Marine Industry Reputation

The WASSP-S™ System has been proven to be durable in the rugged commercial fishing industry. Manufactured by ENL Ltd in Auckland, New Zealand and imported into the United States by Furuno USA, a well-known and respected marine electronics company. Ross Laboratories of Seattle, Washington, a well-respected survey equipment manufacturer, has been awarded a Furuno "Elite" Dealer status for selling the system in the United States.

★Real time 3-D Terrain Modeling

The WASSP-STM comes with “Navigator”™ software that provides real time 3-D views of the bottom and can be stored on the system’s hard drive for later viewing. The 3-D data can be rotated for different viewing angles; providing a great deal of information without the need for data processing in the field.

When interfaced with Hysweep™ software, terrain models and object detection can easily be created for an area.



Salmon Bay, Seattle, Washington USA
Hysweep™ data imported in to Google Earth.

Want to hear more about what this exciting product can do for you? We’d love to answer your questions. Please visit our website at www.rosslaboratories.com or call **Ross Laboratories, Inc.** at **206.324.3950**.

Ross
Laboratories, Inc.

FURUNO U.S.A.

wassp
MULTIBEAM
WATER COLUMN AND SEAFLOOR SONAR

3138 Fairview Ave E. • Seattle, WA 98102 USA • (206) 324 - 3950 • FAX (206) 329 - 0250
<http://www.rosslaboratories.com> • Email: info@rosslaboratories.com